

CASSETTE BOXES



CASSETTE BOXES

	QTY	EACH	1+ CASES	10+ CASES	20+ CASES
NORELCO STYLE - HEAVY DUTY - CLEAR/CLEAR	250	.23¢	.11¢	.10¢	.095¢
NORELCO STYLE - HEAVY DUTY - CLEAR/BLACK	250	.23	.11	.09	.085
SOFT POLY	500	.20	.08	.07	.065
CRYSTAL POLY - CLEAR	500	.25	.09	.085	.08
DOUBLE (SIDE X SIDE) - CLEAR/CLEAR	200	.50	.45	.37	.32

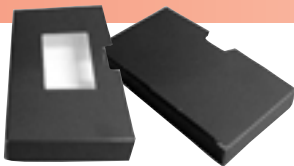


AUDIO CAPSULES



	QTY	EACH	1 CASE	1 CASE	1 CASE
1 CAPACITY	100	.56¢	.46¢	.52¢	.30¢
2 CAPACITY	100	.56	.46	.52	.30
4 CAPACITY	100	.60	.49	.56	.34
6 CAPACITY	100	.90	.49	.86	.34

VHS SLEEVES



	CASE	EACH	500/CASE	5+ CASES
WHITE	500	.17¢	.10¢	.085¢
BLACK	500	.19	.11	.095
COLORS (Blue, Green, Red, Gold, Burgundy, Yellow)	500	.20	.12	.11
PLASTIC	100	.40	.33	.28

(MANY SLEEVES AVAILABLE IN SIDE OR BOTTOM LOAD)

FOR LARGER QUANTITIES - CALL FOR DISCOUNT PRICING



VHS & 3/4" VIDEO BOXES

	CASE	EACH	1 CASE	5+ CASES	10+ CASES
AT3 - FULL CLEAR OVERLAY (Black, Blue, Clear, Red, White)	100	.70¢	.60¢	.55¢	.50¢
AT2 - 1/3 CENTER CLEAR OVERLAY (Black, Blue, Red, White)	100	.70	.60	.55	.50
AT1 - NO CLEAR OVERLAY (Black, Clear)	100	.65	.55	.50	.45

FOR LARGER QUANTITIES - CALL FOR DISCOUNT PRICING

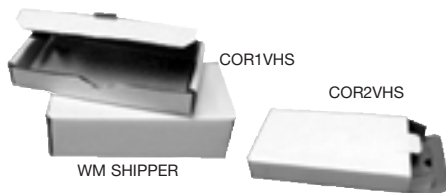


DELUXE SPECIAL - NO HUB RING

	CASE	EACH	1 CASE	1+ CASES	10+ CASES
BLACK, FULL CLEAR OVERLAY, ROUND SPINE	50	.55	.45	.40	.34
FROSTY, NO OVERLAY, SQUARE SPINE	50	.50	.40	.35	.29

	CASE	EACH	1 CASE EACH	1+ CASE NOW
VHS CAPSULE, FULL OVERLAY (Black, White)	108	.61¢	.56¢	.39¢

CARDBOARD VHS SHIPPER BOXES



	QTY	EACH	1-3 CASES	4+ CASES
TOP-LOAD, HOLDS 1 VHS (COR1VHS)	250	.29¢	-	-
TOP-LOAD, HOLDS 2 VHS (COR2VHS)	100	.39¢	-	-
BOTTOM-LOAD, HOLDS 1 VHS (WM SHIPPER) (CORF1VHS)	270	.16	.14	.13